

# COMMUNITY HEALTH NEEDS ASSESSMENT FINDINGS

June 27, 2017

---

Kirstin Craciun, MPP, MSW Director, Community Outreach  
The Center for Health Affairs



# THE CENTER FOR HEALTH AFFAIRS: OVERVIEW

# THE CENTER'S MEMBERSHIP

## ASHTABULA COUNTY MEDICAL CENTER

## CLEVELAND CLINIC HEALTH SYSTEM

- Avon Hospital
- Cleveland Clinic
- Cleveland Clinic Children's Hospital for Rehabilitation
- Euclid Hospital
- Fairview Hospital
- Hillcrest Hospital
- Lutheran Hospital
- Marymount Hospital
- Medina Hospital
- South Pointe Hospital

## GRACE HOSPITAL

## LAKE HEALTH

- West Medical Center
- TriPoint Medical Center

## LOUIS STOKES, CLEVELAND VA MEDICAL CENTER

## MERCY HEALTH

- Mercy Allen Hospital
- Mercy Regional Medical Center

## METROHEALTH SYSTEM

- MetroHealth Medical Center

## SISTERS OF CHARITY HEALTH SYSTEM

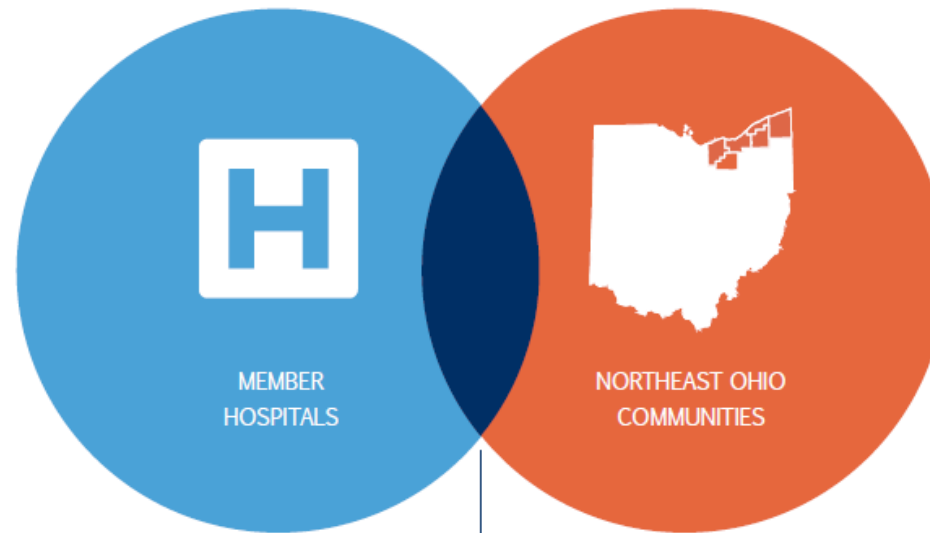
- St. Vincent Charity Medical Center

## SOUTHWEST GENERAL HEALTH CENTER

## UNIVERSITY HOSPITALS

- UH Ahuja Medical Center
- UH Bedford Medical Center
- UH Cleveland Medical Center
- UH Conneaut Medical Center
- UH Elyria Medical Center
- UH Geauga Medical Center
- UH Geneva Medical Center
- UH MacDonald Women's Hospital
- UH Parma Medical Center
- UH Portage Medical Center
- UH Rainbow Babies and Children's Hospital
- UH Richmond Medical Center
- UH Samaritan Medical Center
- UH Seidman Cancer Center
- UH St. John Medical Center

# THE LEADING ADVOCATE FOR NE OHIO HOSPITALS



- H** WORKFORCE (NEONI)
- H** FINANCE & REIMBURSEMENT
- H** WAGE INDEX
- H** EMERGENCY PREPAREDNESS
- H** POLICY & ADVOCACY
- H** PENSION

## THE CENTER'S VALUE

- H** COMMUNITY HEALTH ASSESSMENTS
- H** CHILDHOOD ASTHMA
- H** INFANT MORTALITY
- H** CHRONIC DISEASE
- H** OPIOID ADDICTION
- H** BEHAVIORAL HEALTH

## THE CENTER'S INITIATIVES

- ☆ CHNA ROUNDTABLE OBESITY INITIATIVE
- ☆ OPIOID TASKFORCE
- ☆ INFANT MORTALITY INITIATIVE
- ☆ BETTER HEALTH PARTNERSHIP ASTHMA COLLABORATION
- ☆ HUB PATHWAYS EXPLORATION
- ☆ BEHAVIORAL HEALTH INITIATIVES

# FEDERAL HEALTHCARE REFORM

# AFFORDABLE CARE ACT: KEY PROVISIONS

## COMMUNITY HEALTH NEEDS ASSESSMENTS | IMPLEMENTATION STRATEGIES

Required for all 501(c)(3) hospitals  
Conduct at least once every 3 years  
Submit to the IRS on Form 990

## GOALS

Define the community served  
Identify health needs of the community  
Develop plans to address health needs  
Focus on the needs of medically underserved, low-income and minority populations  
Evaluate the impact of actions

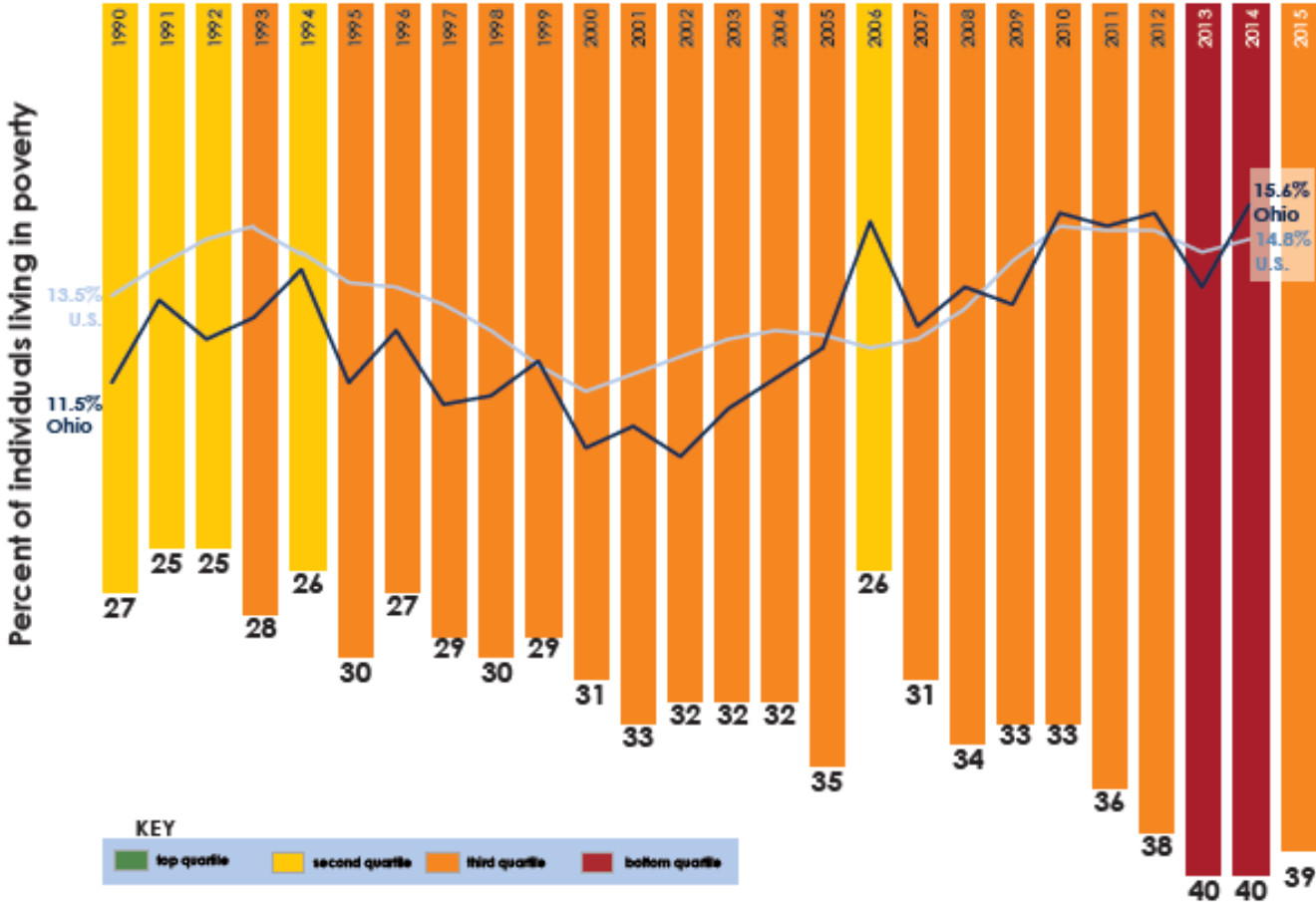
## PENALTIES FOR NON-COMPLIANCE

\$50,000 excise tax per facility, per year  
Potential loss of tax-exempt status

# STATE-LEVEL POPULATION HEALTH PLANNING

# OHIO HAS MANY HEALTH CHALLENGES

Figure 1.2. Ohio's rank in America's Health Rankings from 1990 to 2015



Source for poverty rate: U.S. Census Bureau, Current Population Survey, Annual Social and Economic Supplements, Historical Poverty Tables – People.



# OHIO DEPARTMENT OF HEALTH (ODH) GUIDANCE

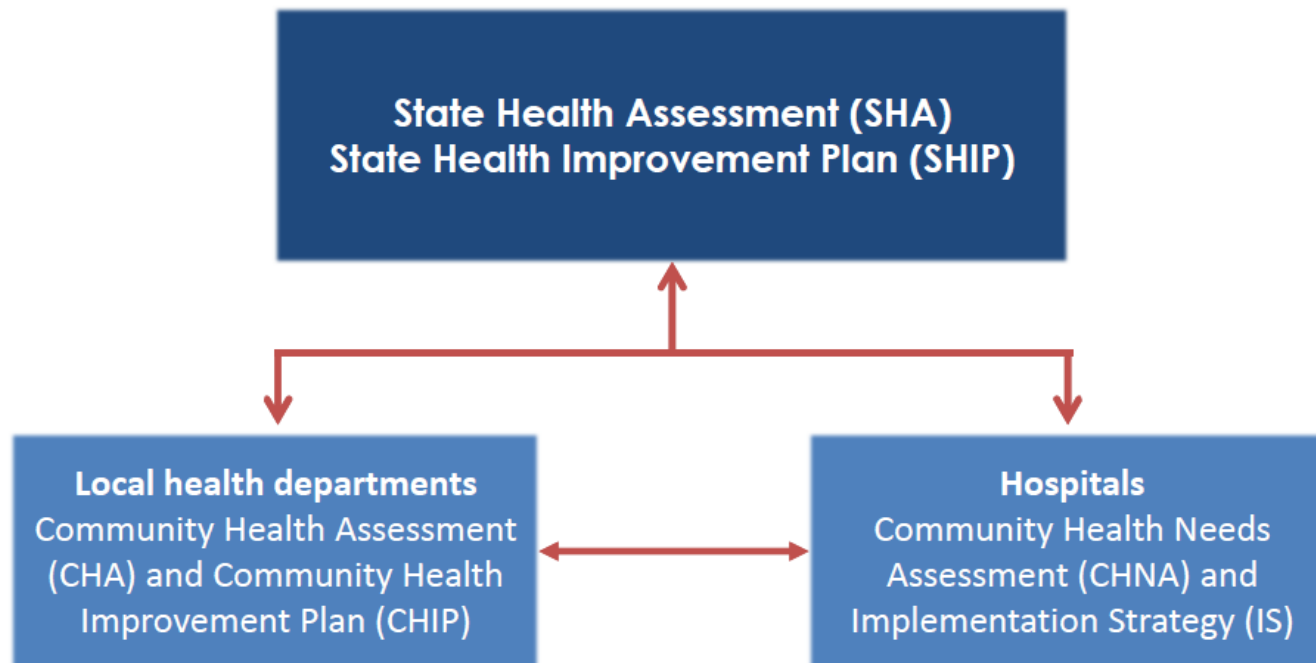
STATE AND  
LOCAL PLAN  
ALIGNMENT

HOSPITAL AND  
LOCAL HEALTH  
DEPARTMENT  
ALIGNMENT

TRANSPARENCY  
AND  
ACCESSIBILITY

FUNDING

# ODH GUIDANCE: STATE AND LOCAL PLAN ALIGNMENT



# 2017-2019 STATE HEALTH IMPROVEMENT PLAN

## 3 priority topics

Mental health and  
addiction

Chronic disease

Maternal and  
infant health

## 10 priority outcomes

- ↓ Depression
- ↓ Suicide
- ↓ Drug dependency/  
abuse
- ↓ Drug overdose  
deaths

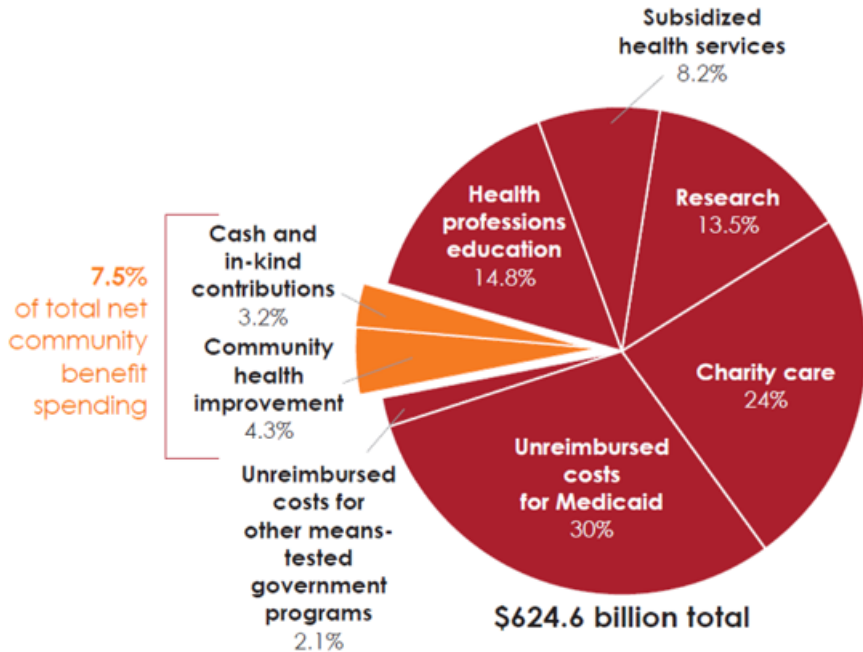
- ↓ Heart disease
- ↓ Diabetes
- ↓ Child asthma

- ↓ Preterm births
- ↓ Low birth weight
- ↓ Infant mortality

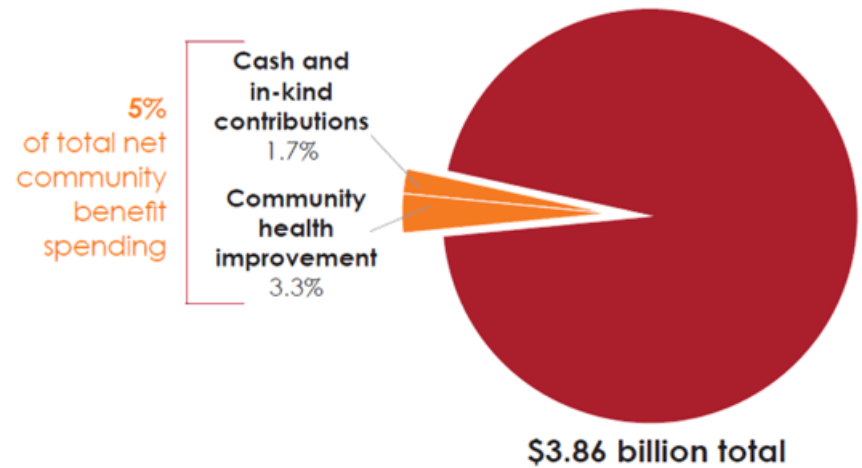
**Equity:** Priority populations for each outcome above

# ODH GUIDANCE: FUNDING

## National Distribution of Hospital Community Benefit Expenditures 2011

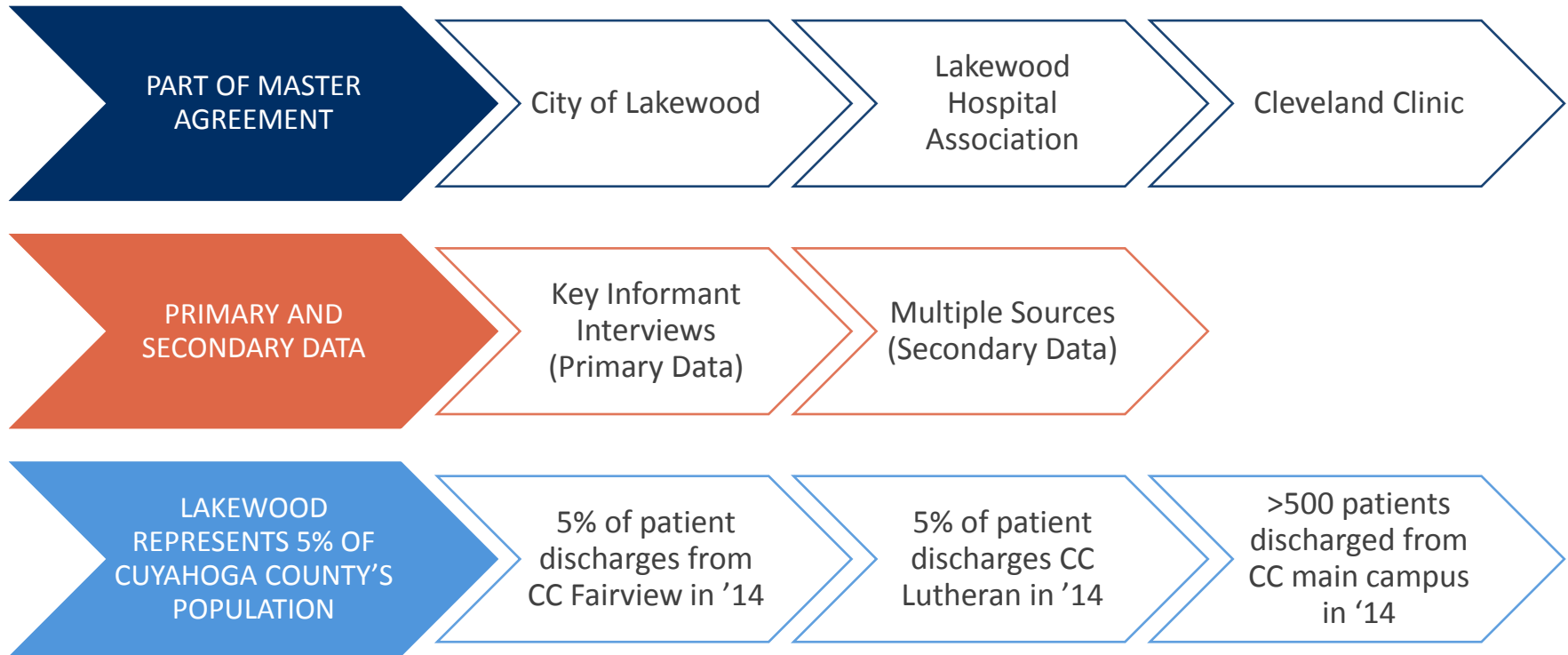


## Ohio Distribution of Hospital Community Benefit Expenditures 2012



# LOCAL-LEVEL POPULATION HEALTH PLANNING CLEVELAND CLINIC FAIRVIEW CHINA

# ANALYSIS OVERVIEW



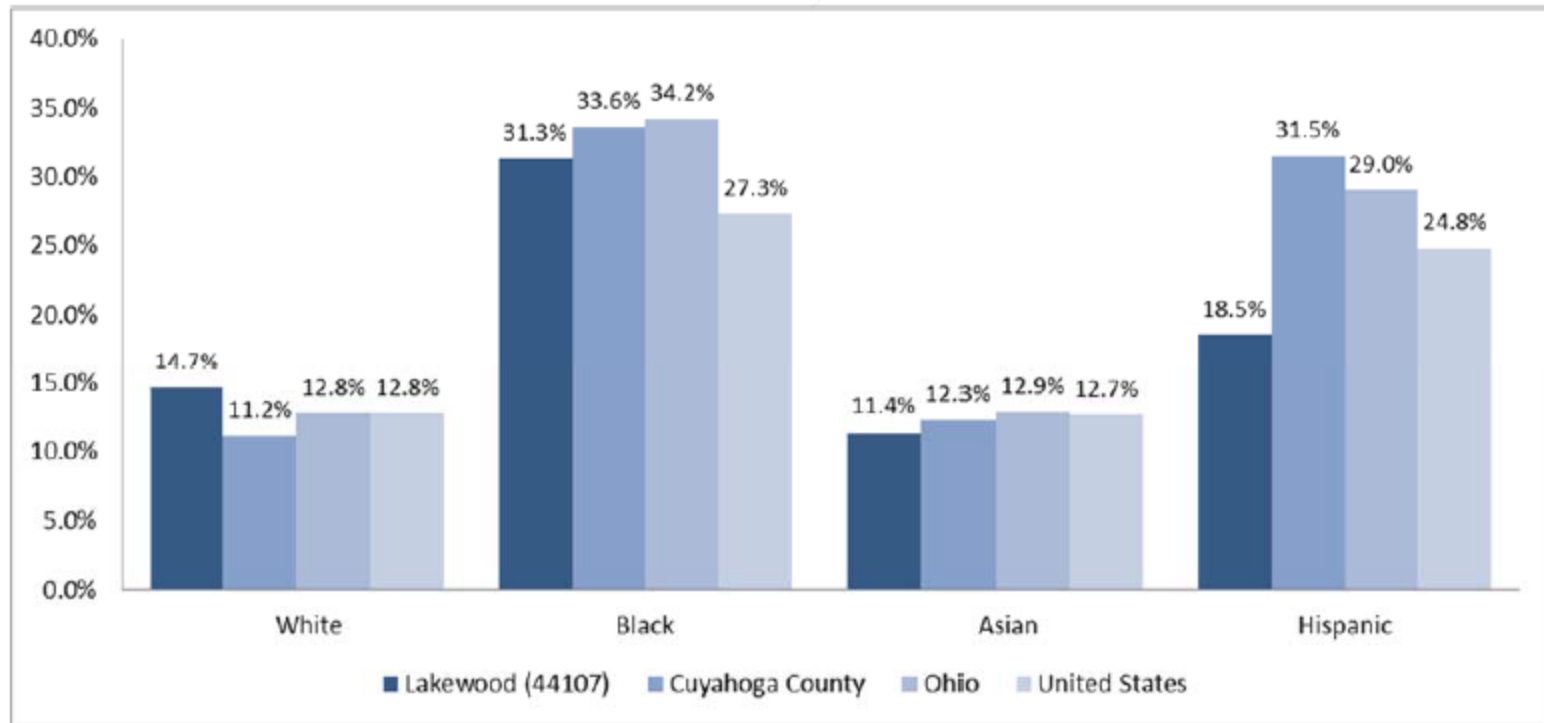
# KEY FINDINGS

## 7.4% UNINSURED RATE LAKEWOOD DEMOGRAPHIC TRENDS 2015 TO 2020

| Age/Sex Cohort | Lakewood<br>(44107)<br>Estimated<br>Population<br>2015 | Lakewood<br>(44107)<br>Projected<br>Population<br>2020 | Lakewood<br>(44107)<br>Percent<br>Change<br>2015-2020 | Cuyahoga<br>County<br>Percent<br>Change<br>2015-2020 | Northeast<br>Ohio<br>Percent<br>Change<br>2015-2020 |
|----------------|--------------------------------------------------------|--------------------------------------------------------|-------------------------------------------------------|------------------------------------------------------|-----------------------------------------------------|
| 0-17           | 10,136                                                 | 10,067                                                 | -0.7%                                                 | -4.5%                                                | -4.8%                                               |
| Female 18-44   | 10,774                                                 | 10,178                                                 | -5.5%                                                 | -2.0%                                                | -0.7%                                               |
| Male 18-44     | 10,920                                                 | 10,224                                                 | -6.4%                                                 | -0.2%                                                | 0.6%                                                |
| 45-64          | 13,502                                                 | 13,408                                                 | -0.7%                                                 | -6.5%                                                | -5.5%                                               |
| 65+            | 6,560                                                  | 7,908                                                  | 20.5%                                                 | 12.4%                                                | 13.0%                                               |
| <b>Total</b>   | <b>51,892</b>                                          | <b>51,785</b>                                          | <b>-0.2%</b>                                          | <b>-1.1%</b>                                         | <b>-0.4%</b>                                        |

Source: Truven Market Expert, 2015.

# POVERTY RATES BY RACE | ETHNICITY 2014



Source: U.S. Census, ACS 5-Year Estimates, 2010-2014.



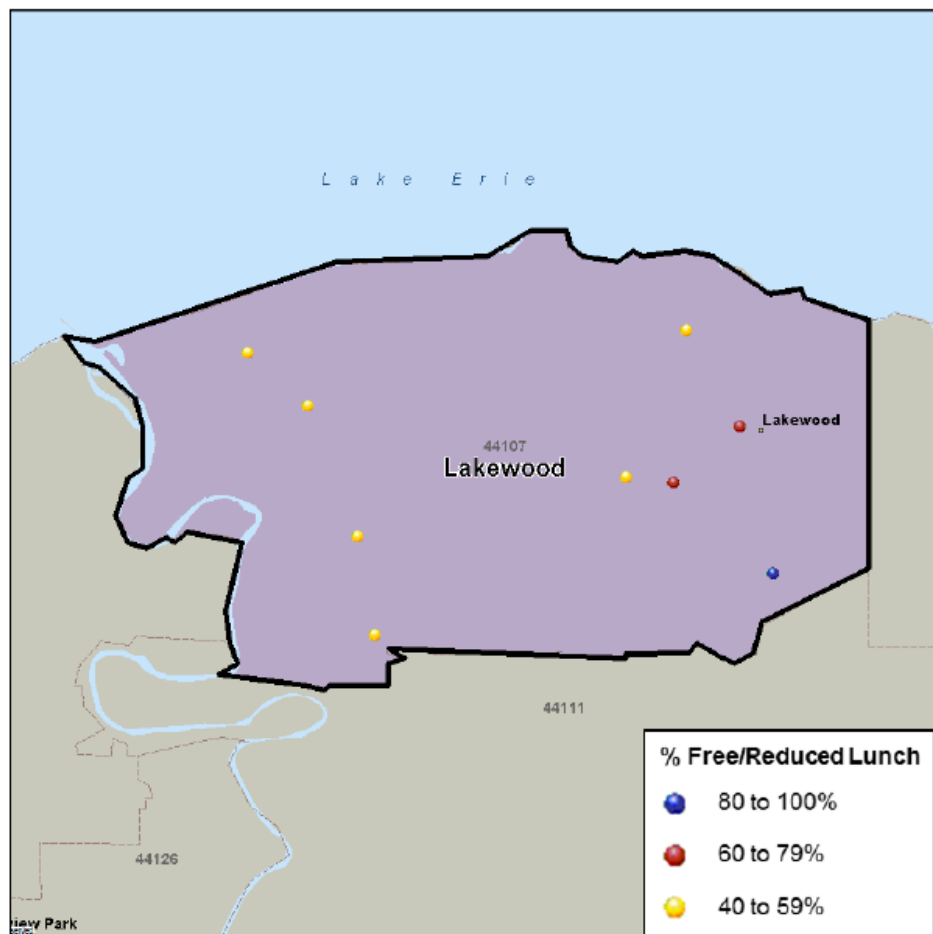
# LOW-INCOME CENSUS TRACTS



Source: US Department of Agriculture Economic Research Service, ESRI, 2015.

# ELIGIBILITY FOR FREE OR REDUCED PRICE LUNCHES

## PUBLIC SCHOOL ELIGIBILITY FOR FREE OR REDUCED PRICE LUNCHES: SCHOOL YEAR 2014-2015



Source: Ohio Department of Education, 2014.

# COMMUNITY INPUT

ACCESS TO CARE

CHRONIC  
CONDITIONS

MENTAL HEALTH &  
BEHAVIORAL HEALTH  
SERVICES

TRANSPORTATION

RESPIRATORY  
DISEASES

ALCOHOL &  
SUBSTANCE ABUSE

NEEDS OF  
THE ELDERLY

# AMBULATORY CARE SENSITIVE CONDITIONS ABOVE STATE AVERAGE

DIABETES

LONG-TERM COMPLICATIONS  
UNCONTROLLED

ANGINA WITHOUT PROCEDURE

DEHYDRATION

CHRONIC OBSTRUCTIVE  
PULMONARY DISEASE (COPD)

# SUMMARY OF KEY HEALTH NEEDS

## ACCESS TO AFFORDABLE HEALTH CARE

- Low-income individuals
- Growing elderly population

## ECONOMIC DEVELOPMENT | COMMUNITY CONDITIONS

- Socioeconomic concerns
- County-wide crime issues

## CHRONIC DISEASES | OTHER HEALTH CONDITIONS

- High rates of:
  - Diabetes
  - Smoking
  - Asthma
- High rates of preventable admissions:
  - Diabetes
  - COPD
  - Congestive Heart Failure

## HEALTH PROFESSIONS EDUCATION

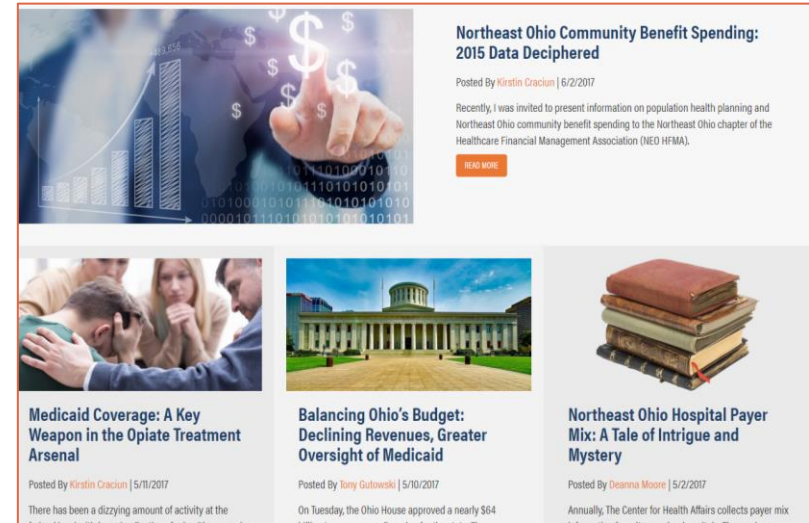
- Nearby health professional shortage areas

# FOR MORE INFORMATION



## KIRSTIN CRACIUN

Director, Community Outreach  
The Center for Health Affairs  
216.255.3616  
[kirstin.craciun@chanet.org](mailto:kirstin.craciun@chanet.org)



## NEW HEALTH POLICY BLOG

The Center for Health Affairs' public affairs team is providing timely, insightful and unbiased info on health policy topics and more at...  
[neohospitals.org/blog](http://neohospitals.org/blog)

# THANK YOU!

---

Questions?

