

Lakewood Police Department

12650 Detroit Ave.
Lakewood, Ohio 44107
www.onelakewood.com
police@lakewoodoh.net
216-521-6773

Speed Enforcement Evaluator

Location:
1539 Woodward

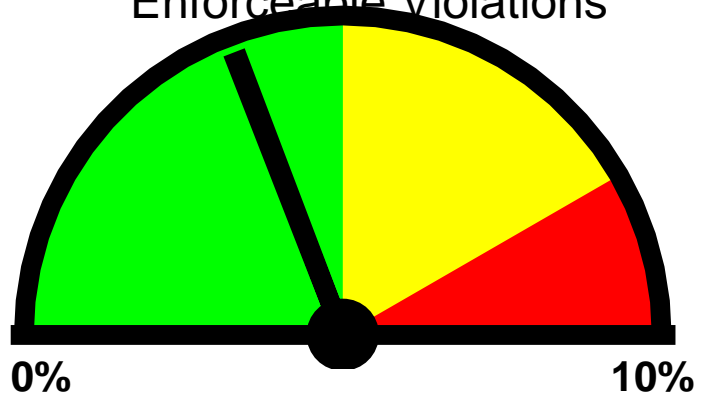
Closest Cross Street:
Detroit Avenue

Analysis Dates:
Thursday, July 28, 2011
Wednesday, August 03, 2011

Equipment Used:
Jammr Radar Recorder

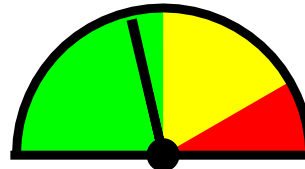
Installed By:
Ortiz/Busi

Total Percentage of Enforceable Violations



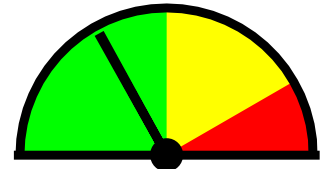
0% **10%**
Posted Speed Limit: 25 MPH
Enforcement Tolerance: 12 MPH
Enforcement Limit: 38 MPH & Up
Percentage Above Limit: 3.8%
Enforcement Rating: **LOW**

Approach Lane



Percent Above Limit: 4.3%
Enforcement Rating: **LOW**

Receding Lane



Percent Above Limit: 3.4%
Enforcement Rating: **LOW**

Combined

1-5	6-10	11-15	16-20	21-25	26-30	31-35	36-40	41-45	46-50	51-55	56-60	61-65	>65
0	69	319	445	1377	4479	3488	807	89	6	2	1	3	0

85 percentile = 33

Approach Lane

1-5	6-10	11-15	16-20	21-25	26-30	31-35	36-40	41-45	46-50	51-55	56-60	61-65	>65
0	38	127	228	659	2207	1782	421	53	6	1	1	3	0

85 percentile = 33

Receding Lane

1-5	6-10	11-15	16-20	21-25	26-30	31-35	36-40	41-45	46-50	51-55	56-60	61-65	>65
0	31	192	217	718	2272	1706	386	36	0	1	0	0	0

85 percentile = 33